

SWINTON COOKERY SCHOOL

ACCESS STATEMENT

This access statement is available in larger print on request

Pre-Arrival

Please contact us ahead of your stay if any specific equipment is required to visit. If we currently don't have a particular item at the cookery school, we will endeavor to ensure we do prior to your visit.

Getting to Swinton Cookery School

For full details and maps of how to reach Swinton Cookery School, please see the directions section on our website on the 'Contact us' page and then 'Getting to us'.

Alternatively, you can plan your journey by car or public transport using www.transportdirect.info simply enter your postcode, and ours which is HG4 4JH, to obtain directions.

By car

PLEASE NOTE THAT SATELITE NAVIGATION IS INACCURATE.

From the South

Please take junction 50 from the A1 (M) and follow the signs to Masham

From the North

Please take junction 51 from the A1 (M) and follow the signs to Bedale. Masham is sign posted from Bedale.

By train

The nearest railway stations are Thirsk (14.7 miles) and Northallerton (15 miles). There are taxis available at Northallerton and arrangements can be made via the hotel for collection by taxi from Thirsk station. If you require an accessible taxi we would be delighted to arrange this, just let us know in advance, advise us a minimum of 48 hours before your arrival date.

By bus

The nearest bus stop is at the square in Masham. There is a 'Yorbus' stop at the gates to Swinton Park Hotel. We can arrange for a taxi to transfer you to Swinton Park Hotel, a three minute taxi ride.

Walking

Please note that there is no pavement on the country lane from Masham to Swinton, so do take care when walking. The walk is undulating and is approximately a mile in length.



Car Parking and Arrival

Each Cookery course starts with a greeting in the Morning Room at Swinton Park.

The hotel's main access is through a historic (Georgian) gateway entrance which is 3 metres wide and along a single track, one-way drive set on a small hill, with a steady incline to the stone canopied original carriage entrance to the house.

Car parking

- Free 24 hours parking with 48 car park spaces are available in the main car park, 200 metres from the main entrance, on a flat tarmac surface. Additional graveled parking is available behind the Coach House building with electric charging points.
- Four 'Blue Badge' spaces are available at the side entrance of the hotel, in the turning circle.
- The main entrance is externally lit by lights under the archway.
- Guests can be dropped off directly outside reception by driving under the archway.

Arrival

- External archway double doors are secured open, with the interior glass doors opening inwards. They are secured open, or a member of staff will be on hand to open the doors for you.
- The main doors are 2 metres wide and the other entrance doors are 37 inches wide.
- Level access to the reception desk directly in front of you, with a lowered desk to the right of the desk.
- Water bowl provided for assistance dogs on request.



Main entrance under the archway



Entrance leading to the reception desk



Main Entrance and the Morning Room

- A receptionist is on duty at all times between 7am and 11pm. From 11pm until 7am a night porter is on site and can be contacted if any assistance is required.
- The reception desk has a lower section for registration paperwork to be completed if required.
- Magnifying glass, pen and paper are available upon request.
- Level access throughout the reception area and Morning Room.
- The reception area is well and evenly lit with spot lights, hanging lights, 2 large windows and free standing floor lights.
- Behind the Reception desk there is a large mirror on the wall.
- The Morning Room is evenly and well lit with overhead lighting and natural daylight from 7 windows.
- A variety of seating is available in the Morning Room including comfortable sofas and arm chairs, with coffee tables at a variety of heights.
- Good space between furniture for wheelchair / pushchair access or sight impaired guests.
- Assistance is available for guests who may not be able to access reception from the alternative entrances.



Lowered reception desk



Morning Room



Clear signage around the Estate

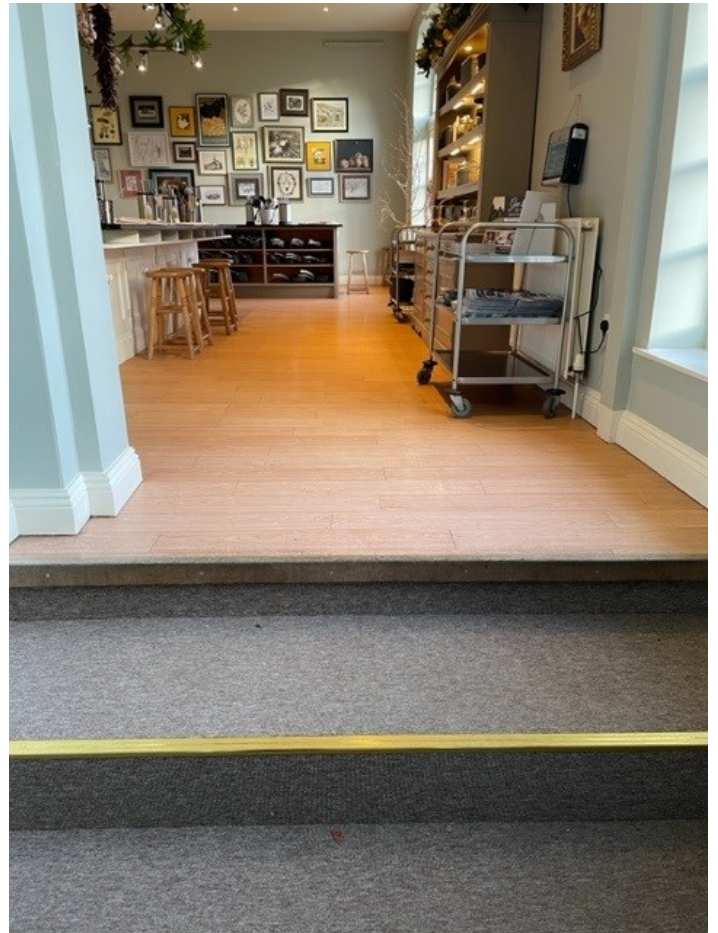


Access to Swinton Cookery School

- Guests will need to make their way from Swinton Park's reception, to Swinton Cookery School, which is a distance of 100m over a tarmac driveway.
 - There is a loose gravel path leading to the Cookery School, which is 109cm wide, leading to an external door which is 106cm wide.
 - In the entrance way there are rugs on a carpeted floor.
 - The internal door measures 79cm wide leading into the Cookery School with 2 x 22cm steps.
- There is a ramp available upon request.



Gravel footpath leading to Swinton Cookery School



Steps leading into the kitchen area



Swinton Cookery School

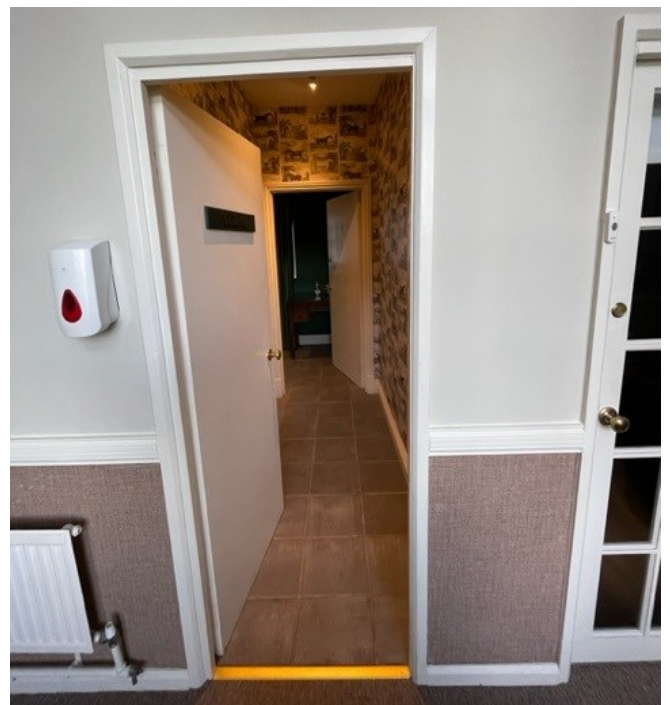
- Marble working stations stand at 91cm tall and are equipped with induction hobs. Stools for sitting on are at each work station and are 61cm tall.
- A portable work station is available on request and can be equipped with an induction hob. This work station is 78cm tall.
- The floor is wooden laminate flooring.
- There are spotlights in the ceiling and two large windows which create natural light.
- The relaxed seating area has benched seating which is 52cm high, with cushions on the benches and wooden back rest.
- The toilet is located down 2 x 22cm steps (ramp available upon request) and through 2 x 79cm wide internal doors. The door leading to the toilet is 69cm wide. The toilet flooring is tiled.



Working station



Relaxed seating area



Door which leads to two toilet cubicles

