

SWINTON PARK HOTEL

ACCESS STATEMENT

This access statement is available in larger print on request

Pre-Arrival

Please contact us ahead of your stay if any specific equipment is required to stay. If we currently don't have a particular item at the hotel, we will endeavor to ensure we do prior to your arrival.

Getting to Swinton Park Hotel

For full details and maps of how to reach Swinton Park Hotel, please see the directions section on our website on the 'Contact us' page and then 'Getting to us'.

Alternatively, you can plan your journey by car or public transport using www.transportdirect.info simply enter your postcode, and ours which is HG4 4JH, to obtain directions.

By car

PLEASE NOTE THAT SATELITE NAVIGATION IS INACCURATE.

From the South

Please take junction 50 from the A1 (M) and follow the signs to Masham

From the North

Please take junction 51 from the A1 (M) and follow the signs to Bedale. Masham is sign posted from Bedale.

By train

The nearest railway stations are Thirsk (14.7 miles) and Northallerton (15 miles). There are taxis available at Northallerton and arrangements can be made via the hotel for collection by taxi from Thirsk station. If you require an accessible taxi we would be delighted to arrange this, just let us know in advance, advise us a minimum of 48 hours before your arrival date.

By bus

The nearest bus stop is at the square in Masham. There is a 'Yorbus' stop at the gates to Swinton Park Hotel. We can arrange for a taxi to transfer you to Swinton Park Hotel, a three minute taxi ride.

Walking

Please note that there is no pavement on the country lane from Masham to Swinton, so do take care when walking. The walk is undulating and is approximately a mile in length.



Car Parking and Arrival

The hotel's main access is through a historic (Georgian) gateway entrance which is 3 metres wide and along a single track, one-way drive set on a small hill, with a steady incline to the stone canopied original carriage entrance to the house.

Car parking

- Free 24 hours parking with 48 car park spaces are available in the main car park, 200 metres from the main entrance, on a flat tarmac surface. Additional graveled parking is available behind the Coach House building with electric charging points.
- Four 'Blue Badge' spaces are available at the side entrance of the hotel, in the turning circle.
- Free valet car parking is available.
- The main entrance is externally lit by lights under the archway.
- Guests can be dropped off directly outside reception by driving under the archway.

Arrival

- External archway double doors are secured open, with the interior glass doors opening inwards. They are secured open, or a member of staff will be on hand to open the doors for you.
- The main doors are 2 metres wide and the other entrance doors are 37 inches wide.
- Level access to the reception desk directly in front of you, with a lowered desk to the right of the desk.
- Porter service is available 24 hours a day to assist with luggage / parking.
- Water bowl provided for assistance dogs on request.



Main entrance under the archway



Entrance leading to the reception desk



Main Entrance and the Morning Room

- A receptionist is on duty at all times between 7am and 11pm. From 11pm until 7am a night porter is on site and can be contacted if any assistance is required.
- The reception desk has a lower section for registration paperwork to be completed if required.
- Magnifying glass, pen and paper are available upon request.
- Level access throughout the reception area and Morning Room.
- The reception area is well and evenly lit with spot lights, hanging lights, 2 large windows and free standing floor lights.
- Behind the Reception desk there is a large mirror on the wall.
- The Morning Room is evenly and well lit with overhead lighting and natural daylight from 7 windows.
- A variety of seating is available in the Morning Room including comfortable sofas and arm chairs, with coffee tables at a variety of heights.
- Good space between furniture for wheelchair / pushchair access or sight impaired guests.
- When guests are shown to their bedrooms, the porter will explain the layout and provide information on where various facilities are located.
- Safety and evacuation procedures are clearly displayed in all rooms.
- A further familiarisation tour is available on request.
- Assistance is available for guests who may not be able to access reception from the alternative entrances.



Lowered reception desk



Morning Room



Clear signage around the hotel



Reception to Bedrooms

- The doors from the Morning Room are 94cm wide and lead into the Lower Hall. There are seven steps with hand rail up to a long, wide corridor providing access to the main public reception rooms on the ground floor.
- The steps between the Lower Hall and corridor can be avoided by using the side entrance.
- The side entrance is located next to the 'Blue Badge' parking spaces and can be accessed by a slight ramp.
- There is comfortable seating along the corridors.
- The main ground floor corridor is well lit with large windows and spot lights.
- The lift is accessible via the door to the right which also leads to the DDA compliant toilet on the ground floor.
- All public areas within the hotel, halls, stairs, landings are well lit using over head lighting and natural daylight.
- All corridors and stairs are covered with a short pile carpet.



Blue Badge parking at the side entrance



Ground floor corridor



Lower Hall



Public Areas

- All public areas within Swinton Park Hotel, halls, stairs, landings are well lit using over head lighting and natural daylight.
- The Drawing Room has a polished wooden floor with no steps, a large rug with 8 sofas, 10 armchairs, 7 coffee tables and a grand piano.
- The Private Sitting Room has a short pile carpet with 3 sofas and 3 coffee tables.
- All public rooms have high ceilings with plenty of natural daylight.
- Assistance dogs are allowed into all rooms.

Public Toilets

- There are ladies and gentlemen's toilets located on the ground floor. There are no steps from the main corridor to either, and both are located near to the lounges, bar and restaurant.
- The toilet door has a clear opening of 94cm.
- All the public toilets have non-slip floor tiles and all toilets are well lit with ceiling light bulbs.
- There is a DDA compliant toilet with baby changing facilities.
- The toilet height in the easy access facility is 45cm.
- There is one vertical rail and an adjustable rail next to the toilet which is 74cm high.
- The hand dryer height is 89cm from the ground.
- There are lever taps on the sinks which is 86cm from the ground.



Drawing Room



DDR compliant toilet and well lit corridor leading to Samuel's



Private Sitting Room



The lift on the ground floor leading to outside



Samuel's Restaurant

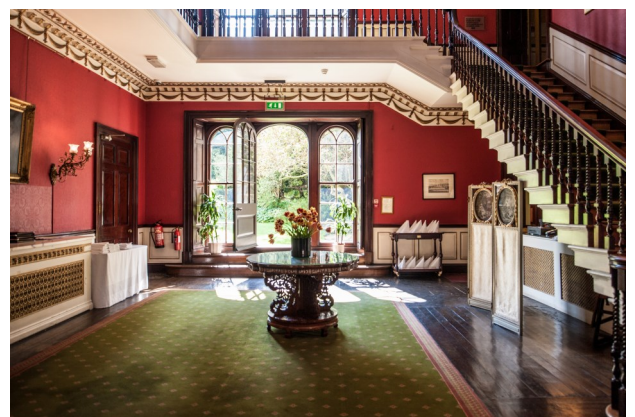
- Samuel's Restaurant is situated on the ground floor, at the end of the main corridor. The door opening to the dining room is 117cm wide.
- Lighting is natural daylight and overhead lighting which is controlled by dimmer switches.
- The flooring is polished wood and is level throughout.
- The chef is delighted to cater for varying dietary requirements throughout breakfast, lunch and dinner. Please advise us when making a booking of any dietary requirements you may have.
- Room service is available.
- For breakfast served in the room, there's a menu in the room to be completed and placed outside your room before 2am.
- Assistance dogs are welcome all public rooms.

Hotel Bar

- The hotel bar is located on the ground floor, just off the main corridor of the hotel with a level surface throughout.
- Furniture is a mixture of armchairs with dining height tables and 2 sofas with low tables.
- The flooring is non-slip carpet tiles and lighting is from a combination of overhead lighting and lamps.



The Hotel Bar



Outside Samuel's Restaurant



Samuel's Restaurant



Bedrooms in the Castle

- There are 32 bedrooms within the main castle which are double / king sized rooms. 23 of these bedrooms can be made up with twin beds.
- On the first floor there are 11 bedrooms and on the second, there are 21 bedrooms.
- On the first floor, all rooms are accessible via lift, they are Newby Hall, Harlow Carr, Burton Agnes, Knaresborough, Pickering, Thirsk, Scarborough, Whitby, Beverley, Semerwater and Aysgarth.
- On the second floor, Ripon, Wensleydale, Masham, Bradford, Fountains Abbey, Castle Howard, Constable Burton, Thorp Perrow, Swaledale, Jervaulx, Haworth, Bedale, Aldborough, Headingley and Harewood are accessible via lift. Turret, Harrogate, York, Richmond and Bolton Castle are only accessible via stairs.
- Certain rooms are suggested as easy access rooms – with larger bedroom and bathroom doors, walk in showers and larger floor space. Please state your preference at time of booking.
- There are 15 rooms within the main hotel which can be accessed without a step. They are Beverley, Whitby, Scarborough, Thirsk, Pickering, Castle Howard, Constable Burton, Thorp Perrow, Fountains Abbey, Bradford, Haworth, Headingley, Aldborough, Bedale and Harewood.
- There are three rooms with steps within the room, these are Ripon, York Suite and the Turret Suite.
- We are happy to rearrange or remove furniture from any room if required.
- Sofa beds are in a number of bedrooms and z-beds can also be put into bedrooms, depending on the size, for family / carer use.
- The height of all the beds from the top of the mattress to the floor is around 66cm. All beds can be raised if required.
- Rooms are bright and evenly lit both with natural and electric lights. Bedroom lights are controlled by the switches at the door of the bedroom and also next to the bed. Bedside lamps are also in each room. Additional reading lamps can also be requested at reception.

All of the bedrooms offer the following:

- Lighting as above
- Good colour contrast between the floor, walls and doors
- Short pile carpet
- Bedding choice of duvets or sheets and blankets
- Hypo-allergenic pillows are available
- Television with remotes
- Hair-dryer
- Tea and coffee making facilities

For guests who may require more items in their room, all of the below are available on request at Reception:

- Vibrating pillow pad
- Mobile hearing loop
- Large alarm clock
- Shower stool
- 'Elephant feet' for heightening chairs / beds
- Toilet seat to heighten existing toilet
- Bath seat to sit inside the bath
- Wash basin stool



Bathrooms in the Castle and Coach House

- All of the 42 bedrooms have en-suite bathrooms. The door into the bathrooms are around one metre wide. The hotel offers a combination of baths with showers, or separate showers and baths.
- The toilet height is 40cm. Seat raisers and shower seats are available upon request as per above.
- The wash basins are 86cm high.
- Grab rails, horizontal and vertical are available on request and some bathrooms have these as set items within the bathrooms or on request.
- The bathrooms are well lit with overhead lighting and all mirrors have surround-lighting. Towels are located on the heated towel rail holders in the bathrooms. Non slip mats are available next to the bath in all bathrooms.



Stool and raised toilet seat available



Flat entrance into rooms



Grab rails and shower stool available



Step available

Dogs

We welcome dogs to the hotel and allow dogs to stay in the bedrooms, providing bowls and beds. We do not allow dogs other than assistance dogs into rooms where food service takes place, apart from the bar area in The Terrace. We provide an outside water bowl next to the Boot Room entrance all year round and dog towels in the Boot Room in both the Castle and Coach House. We charge £25 per dog, per night for this service. There is no charge for assistance dogs. Some rooms are kept dog free at all times for those suffering from allergies.



The Coach House Bedrooms

- Car parking and arrival is the same for Coach House guests as guests staying in the main hotel.
- Flat surface from the Hotel Reception to the Coach House.
- One of the ground floor rooms (Ilton) is fully DDA compliant and accessible via an external and internal ramp. The external door is 97cm wide.
- Colsterdale (which is a suite) is also accessible via the same external ramp, but there is a step down to the bedroom from the lobby
- The other two bedrooms, Nutwith and Agra Moor, are accessible via a loose gravel path and each room has a step up to the bedroom door from the lobby.
- There is no lift access to the six bedrooms or the Butler's Pantry on the first floor
- There are no connecting rooms in the Coach House, but 4 rooms can share their own dedicated entrance and lobby; two rooms on the ground floor (Nutwith and Agramoor) and two rooms on the first floor (Healey and Ellingstring).
- Rooms are bright and evenly lit both with natural and electric lights. Bedroom lights are controlled by the switches at the door of the bedroom. Bedside lamps are also in each room. Additional reading lamps can also be requested at reception.

All of the bedrooms offer the following:

- Lighting as above
- Good colour contrast between the floor, walls and doors
- Short pile carpet
- Bedding choice of duvets or sheets and blankets
- Hypo-allergenic pillows are available
- Television with remotes
- Hair-dryer
- Tea and coffee making facilities

For guests who may require more items in their room, all of the below are available on request at Reception:

- Vibrating pillow pad
- Mobile hearing loop
- Large alarm clock
- Shower stool
- 'Elephant feet' for heightening chairs / beds
- Toilet seat to heighten existing toilet
- Bath seat to sit inside the bath
- Wash basin stool

Dogs

We welcome dogs to the hotel and allow dogs to stay in the bedrooms, providing bowls and beds. We do not allow dogs other than assistance dogs into rooms where food service takes place, apart from the bar area in The Terrace. We provide an outside water bowl next to the Boot Room entrance all year round and dog towels in the Boot Room in both the Castle and Coach House. We charge £25 per dog, per night for this service. There is no charge for assistance dogs. Some rooms are kept dog free at all times for those suffering from allergies.



Coach House - Ilton Room - fully DDA compliant

- Fully accessible bedroom and bathroom, Disability Discrimination Act compliant.
- Accessible without a step.
- Ramp internally into the room.
- Door into the Ilton room measures 88cm wide.
- Larger bathroom and high ceilings.
- The door into the bathroom measures 84cm wide.
- Can be made up with twin beds or kept as a double bed.
- Alarms by the bed, shower and toilet.
- Sink and shower stool.
- Low level toilet.
- Drop down hanging rail.
- Wet room shower with a free standing bath. Regular and lower level sinks.
- Underfloor heating.

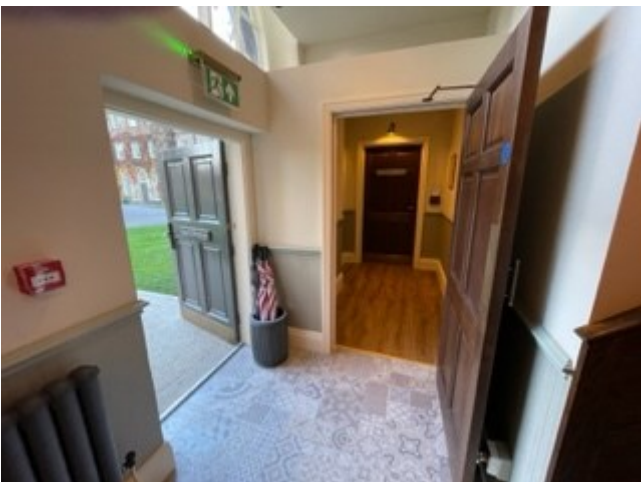


Top & bottom - entrance into the Coach House and Ilton room



Top - the shower with seat & hand rails and free-standing bath.

Bottom - Ilton bedroom leading into the bathroom.



Conference and Meeting Rooms

- Conference and meeting rooms available are on all floors in the main 'Castle'. If stairs need to be kept to a minimum, please mention this when booking.
- The Library is an accessible public room located on ground floor level, with access to a DDA compliant toilet.
- The Panelled Room is located on the first floor.
- The Lister Room is located on the first floor.
- All doors are 81cm wide.
- All rooms have natural light with overhead lighting controlled by a switch next to the meeting room door.
- Upright chairs with or without arms are available, and tables have a clear space around the floor of 60cm.
- A mobile hearing loop system is available on request.



Lister Room



The Library



Panelled Room



Gardens

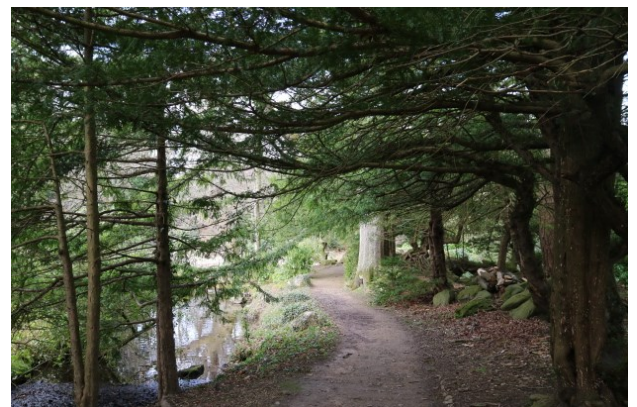
- Entry into the grounds and gardens is from a level with a path through to the front lawn.
- Access to the Walled Garden and Spring Garden can be made through the Birds of Prey aviary.
- Tables and chairs are available on the lawn during the warmer months, which can be accessed from outside, around the side of the hotel or from inside the hotel.
- The garden has a medium incline that leads to over 200 acres of grounds, a 4-acre flat ground walled-garden and an aviary with birds of prey.
- Most paths in the parklands are loose gravel, bumpy in places and with a steep incline beyond Coffin Lake.
- There are benches at the Front Lawn, Spa Garden, Coffin Lake and Top Lake.
- There are a number of gates in the grounds which require a code to gain access—this code can be provided for hotel residents at reception, or day visitors at Swinton Country Club and Spa.



Paths around the Walled Garden



Paths around the parkland



Paths around the lakes





01765 680 900 • reception@swintonestate.com • swintonestate.com
Swinton Park Ltd, Masham, Ripon, North Yorkshire, HG4 4JH