



SWINTON ESTATE

SUSTAINABILITY
REPORT
2025

www.swintonestate.com



WELCOME

Welcome to Swinton Estate's second annual Sustainability Report, where we share with you what we have been doing towards a more sustainable future.

A considerable development for us this year is our Nourish Partnership programme where we hope to align with local and regional businesses to develop their ESG goals. As an Estate, we recognise that sustainability is not merely a goal, but a commitment to preserving the delicate balance between business prosperity, environmental stewardship, and social well-being. Through the Nourish project we hope to work with like minded companies who think and operate in a similar way.

In the pages that follow, we hope to demonstrate the stories behind our efforts to reduce our environmental footprint, foster community engagement, and uphold ethical business practices. We believe that the actions we take, no matter how small, contributes to the larger narrative of a responsible and sustainable Swinton.

We are proud to present our accomplishments which are shaping the landscape of Swinton, now and for the future.

The 4th Earl and Countess of Swinton

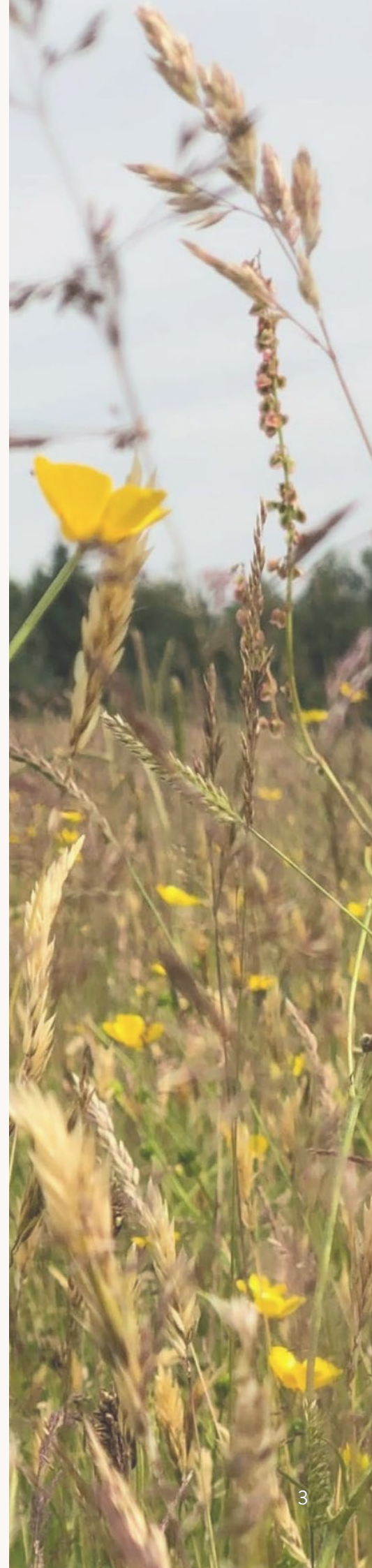
CONTENTS

| | |
|--------------------------------------|---------|
| Welcome | 2 |
| Sustainability | 3 - 6 |
| Transport & Travel Planning | 7 |
| Carbon Footprint | 8 |
| Procurement | 9 |
| Conservation on the Swinton Estate | 10 - 11 |
| Sustainability on the Swinton Estate | 12 |
| People Development | 13 |
| Objectives for 2025 | 14 - 15 |
| Conclusion | 16 |

Sustainable Development Goals

The United Nations created 17 Sustainability Development Goals (SDGs) in 2015 to promote peace and prosperity for people and the planet. Swinton Estate aims to align with the UN SDGs through specific projects and targets.

Here are the goals identified to be specific to Swinton Estate:



SUSTAINABILITY

Our 2024 Resource Consumption

These figures, reflect year-on-year changes, comparing our current usage to the previous year to track progress and trends.

Biomass



Swinton Park Hotel Biomass Use (m3)

Based on 12 months data (wood chip burnt)

Swinton Park Hotel biomass usage has remained relatively stable, with only a slight 2.6% decrease, highlighting our continued progress in reducing reliance on fossil fuels.



Swinton Bivouac Biomass Use (m3)

Based on 12 months of invoice consumption data

Swinton Bivouac's biomass usage increased by 11.3% in 2024. Biomass boiler failures combined with increased opening times have been the main difference when comparing results to prior year.

LPG



LPG Use

Based on 12 months of invoice consumption data

This year, LPG consumption has decreased by 8.8%, reflecting our continued shift towards biomass for central heating and hot water and reduction of LPG in kitchens.



Diesel



Diesel Fuel

Based on 12 months of invoice consumption data

The 8.8% reduction in diesel fuel usage can be attributed to the increased ownership of electric vehicles for employees to use and reduction of use of 4x4 vehicles for sporting activities.

Electricity



Swinton Park Hotel Electricity Use (kWh)

Our electricity consumption has seen a modest 0.7% increase this year, reflecting our ongoing transition towards more sustainable energy sources.

Following our early 2024 kitchen renovations, we have shifted further away from LPG, opting for more energy-efficient induction and electric appliances.

With more guests and employees using our EV charging infrastructure and with many of Estate fleet now almost entirely electric, charging demand has grown. While this increases electricity consumption, it reduces our reliance on diesel and petrol.

In addition to these changes, we have installed solar panels on the roof of the Laundry main office and workshop, helping these operations become more self-sufficient. Since their installation on 30 September 2024, the panels have generated 4,128 kWh of electricity, avoiding 1.44 tonnes of CO₂ emissions by the end of 2024.



Swinton Bivouac Electricity Use (kWh)

This year, Swinton Bivouac has seen a 32.4% increase in electricity consumption, largely due to our continued transition to more sustainable energy sources.

Following the full removal of LPG after last year's kitchen refurbishment, all cooking is now powered by electricity. Additionally, a biomass boiler failure during the past twelve months led to increased reliance on electricity for heating and hot water. When combined with increased guest numbers and extended operating hours, this has contributed to higher energy use.

Solar array update

Planning permission is still being sought for a proposed 400KW ground mounted solar system. It is hoped that planning will be approved in the summer of 2025 with work on site to commence in the autumn and operational in spring 2026. The site will power a third of all electricity at Swinton Park Hotel.





WASTE MANAGEMENT

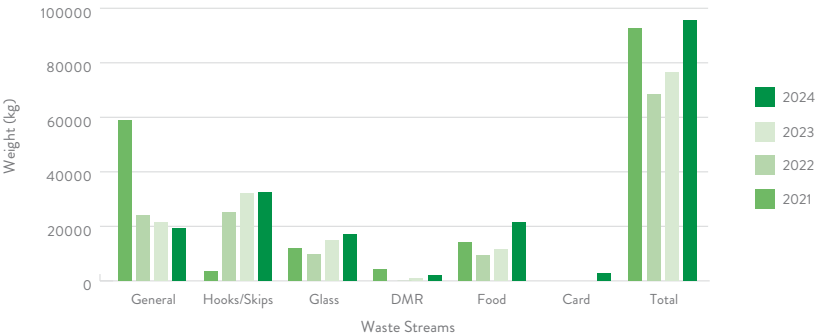
In 2024, we continued to evolve our **Waste Management Plan** to address increasing consumption and expand its monitoring capabilities.

As a result we are seeing further improvements in waste separation, tracking, and communication, allowing us to better understand and manage our impact.

Following the principles of the Lansink Management System, we separate our waste into specific streams including general waste, dry mixed recycling (DMR), cardboard, glass, food waste, and oil.

While total waste increased by 3.93% since 2021, it's encouraging to note a 12% reduction in general waste over the same period, demonstrating meaningful progress.

Swinton Estate Waste Streams 2021 - 2024



Highlights:

- In 2024, the introduction of new contracts for cardboard collections added a new layer of transparency to our recycling efforts.
- Waste audits across departments have strengthened compliance and awareness.
- Increased food waste, driven by operational challenges and high guest numbers, is being addressed through enhanced action plans in the kitchens.
- Partnering with innovative waste management services, we continue to divert general waste from landfills by converting it into electricity within Yorkshire.
- Our compacted cardboard and shredded paper are now transformed into fuel pellets.

TRANSPORT & TRAVEL PLANNING

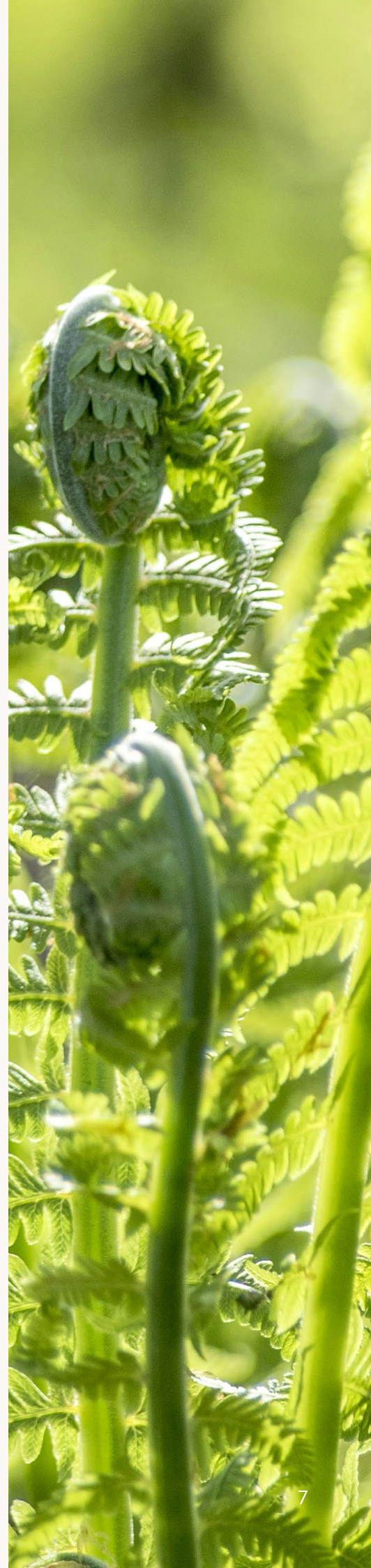
Swinton Estate implements a **Travel Plan** supported by a suite of policies and initiatives to encourage sustainable travel.

Highlights:

- We are proud that we have achieved a **8.8% reduction** in our fleet fuel consumption compared to 2023, **surpassing our target** of a 2% reduction.
- Swinton Estate has implemented several initiatives to promote sustainable transport and has identified additional actions to pursue in the future.

Our initiatives:

- **Electric vehicles:**
Under our insurance policy, employees under the age of 25 can now drive all EV Estate vehicles.
- **EV charging points:**
We provide EV charging points for guest use with reduced cost charging to employees.
- **Sustainable travel:**
We provide cycle parking for employees; employee showers and lockers on site for employees that are walking/cycling. Our guests are also encouraged to take advantage of the multitude of walking and cycle tracks across the Estate.
- **Meeting platforms:**
Actively promote the use of online meeting platforms between employees and suppliers to reduce the need for face-to-face meetings/additional travel.
- **Travel ideas programme including:**
Cycle to work scheme, Octopus electric car scheme, Carpool initiative, Eco Driving tips.

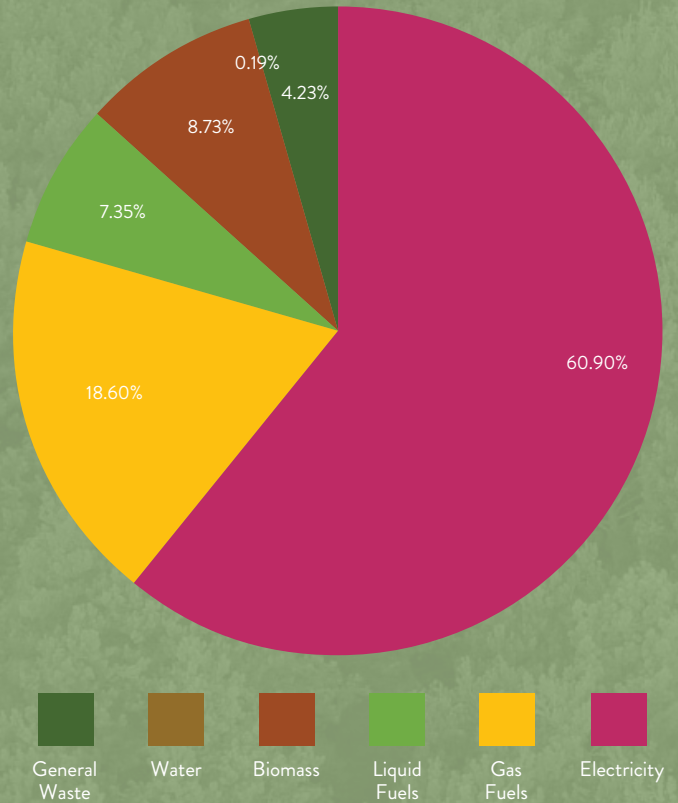


CARBON FOOTPRINT

The 2024 Scope 1 and 2 Carbon Footprint for Swinton Estate, as calculated from 12 months of consumption data across Biomass, Gas Fuels, Liquid Fuels, Electricity, Water and Waste is 577.29 tCO₂e.

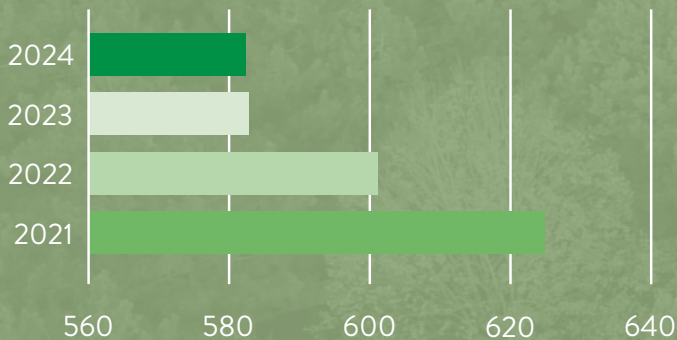
Total CO₂e 2024 - 577.29

Pie chart showcasing the percentages of resources attributed to our Carbon Footprint. (January 1st to December 31st, 2024). Biomass, Gas Fuels, Liquid Fuels, Electricity, Water and Waste.



Annual Carbon Footprint 2021 - 2024

Annual Carbon Footprint totals (tCO₂e) from our baseline year 2021 to 2023.



Key Results



6.74% reduction compared to the 2021 baseline.



0.98% reduction compared to 2023.



Electricity has the highest percentage at 60.90%.



Water the lowest percentage at 0.19%.



PROCUREMENT

A large push has seen many more suppliers sign up to Swinton's **Sustainable Purchasing Charter** which outlines our commitment to sustainable and socially responsible purchasing.

By developing this over the years it will help us make better purchasing decisions, supporting our sustainability goals and reduce the impact of our operations. In turn committing to sustainable purchasing, we can support suppliers who prioritise sustainability and encourage the adoption of environmental practices throughout the supply chain.

[View our current Purchasing Charter here.](#)

CONSERVATION ON THE SWINTON ESTATE

On the Swinton Estate, we have been actively involved in several conservation initiatives over the past year, showcasing our commitment to environmental stewardship.



Ancient tree surveys

Swinton Estate collaborated with the Woodland Trust to survey and document ancient and veteran trees in the Deer Park, identifying over seventy significant trees, including native and non-native examples.

This initiative also provided valuable training opportunities for volunteers and estate employees, emphasising the importance of conserving ancient tree species.



Tree planting

Planted 41,000 trees as part of its woodland creation programme, supported by the Trees for Climate Fund through the White Rose Forest, a regional community forest that supports the creation of new woodland and was developed in conjunction with our tenant farmers.

These efforts not only contribute to carbon sequestration but also enhance wildlife habitats and biodiversity across the Estate.



Agroforestry and biohub project

Working with Dr Vincent Walsh, Swinton Estate have initiated a regenerative agriculture project focusing on conservation agriculture, agroforestry, and forest gardening techniques to enhance biodiversity and soil health.

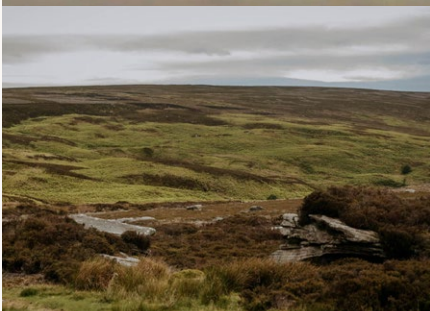
The project also incorporates water management systems to reduce runoff and improve soil moisture retention.



Protecting bird-life

We continue monitor Hen Harrier activity with Nest Cams every year, and our observations this year revealed three successful nests fledging four chicks each.

This helps measure the impact of our conservation work and supports national efforts to protect and promote farmland bird populations.



Peatland and moorland management

Since 2017, we have focused on preserving peatland ecosystems, essential carbon sinks, through sphagnum moss planting and erosion control.

Progress will be measured by carbon sequestration rather than loss prevention. Innovative sensor systems, aligned with the UK Centre for Ecology and Hydrology's monitoring framework, will track the water table and CO2 emissions and sequestration levels.



Targets for 2025:

In 2025, we will deepen our commitment to the conservation of the vital ecosystems on the Swinton Estate through a series of collaborative projects. These initiatives will focus on enhancing biodiversity, protecting natural habitats, and addressing key environmental challenges, strengthening the Estate's role as a steward of the environment.



SUSTAINABILITY ON THE SWINTON ESTATE

Key Sustainability Highlights

Carbon neutrality achieved

Through our woodlands' natural carbon sequestration and ongoing environmental efforts, we have reached carbon neutrality ahead of our 2030 target.

This milestone inspires us as we now aim to reduce our overall carbon footprint by a third by 2040.

Tree planting for the future

With the support of the Trees for Climate Fund, we have planted 41,000 trees in 2024 as part of our broader goal to plant 600,000 trees in the next 20 years. These efforts enhance biodiversity, capture carbon, and create resilient ecosystems.

Waste management

Recycling efforts have increased year-on-year, with innovative solutions such as converting food waste into biogas and compacting shredded paper and cardboard into biomass fuel pellets. Single-use plastic reduction remains a priority across operations.

Our Partnerships

Collaboration is central to our sustainability mission. From working with Yorkshire Rivers Trust to combat invasive species, to supporting local schools with educational sustainability programmes, we value partnerships that foster positive environmental and social impacts. Our newly launched Nourish initiative provides a platform for corporate and community partnerships that support biodiversity, carbon credits, and environmental education.

Community and Recognition

As home to over 25,000 visitors annually, Swinton Estate integrates sustainability into its leisure offerings. From eco-friendly building renovations to electric fleet transitions and guest participation in conservation projects, we continue to engage our community in meaningful ways. Our efforts have earned us national recognition, including awards for sustainable tourism, environmental innovation, and biodiversity protection.

Employee Engagement

Ripon Walled Garden

As part of our Good to Great Ambassadors programme we arranged for a team of fifteen Swinton Ambassadors to give back to our local community by volunteering for a day at Ripon Walled Garden in November 2024. Ripon Walled Garden is a day care facility for adults with learning difficulties. Our volunteers spent the day doing tasks which included preparing for delivery of 600 Christmas trees, painting, tip runs, preparing wreaths for their workshops, making planters, hanging lights, and restoring four wooden buildings.

The management at Ripon Walled Garden were so grateful for the support, in their words it would have taken them 3 weeks to complete the work our team did in a day.

Harrogate Homeless Project and Ripon Community House

As part of Swinton's Twelve Days of Christmas campaign, food and clothing donations were collected from employees and donated to Ripon Community House and Harrogate Homeless Project.



PEOPLE DEVELOPMENT

Our Sustainability Committee

On the Swinton Estate, we uphold a set of commitments encapsulated in the acronym **C.A.S.T.L.E**, representing Customer, Accountability, Service, Team, Local, and Environmental aspects. Each employee actively works towards these commitments.

In October 2022, we established a Sustainability Committee with a focus on our local and environmental responsibilities. This committee plays a crucial role in steering our sustainability initiatives and ensuring alignment with our core values.

Moving forward, we are committed to transparently sharing our progress on this journey of improvement. Our overarching goal is to enhance Swinton Estate as a welcoming and sustainable environment for our employees, tenants, residents, and visitors alike.

[View our Environmental Policy on the Swinton Estate Website here.](#)

Everyday People Development on the Swinton Estate

- Sustainability incorporated into Employee Induction.
- **CPL Learning:** Sustainability training modules for both management and all employees.
- Integration of Sustainability into our recruitment process.

OBJECTIVES FOR 2025

Resource Consumption

Carbon Footprint

As we continue to reduce our carbon footprint and work towards Net Zero, our 2025 objectives are:

- Fully implementing our carbon reduction plan and beginning regular progress reviews against the roadmap.
- Increasing supplier engagement with the Green Procurement Charter to integrate more procurement data into our Carbon Footprint calculations.
- Expanding the scope of quarterly consumption data reviews to include feedback loops and corrective measures for anomalies.
- Introducing additional resources and training to ensure all departments contribute effectively to achieving carbon reduction targets.

Waste Management

Building on the foundation laid in previous years, our 2025 objectives for waste management include:

- Targeting a 3% reduction across all waste streams, focusing on addressing recurring increases in food and glass waste.
- Using insights from re-baselining efforts to develop sharper strategies for waste reduction.
- Launching an enhanced version of the waste dashboard for better visualisation and communication of waste management outcomes.
- Trialling innovative waste separation systems onsite to improve compliance with recycling goals.

Travel Management

To align with our sustainability ambitions, our travel management objectives for 2025 are:

- Expanding the electric vehicle fleet, when replacing older diesel-powered models.
- Strengthening awareness campaigns for employee travel incentives and implementing a rewards programme for sustainable commuting behaviours.
- Initiating feasibility studies on shared transport options for employees to mitigate the environmental impact of commuting.
- Integrating electric vehicle usage and charging data into energy monitoring systems for comprehensive reporting.

Electricity and Water Consumptions

For 2025, the focus on monitoring and reducing consumption will be guided by the following objectives:

- Installing water and electricity sub-meters across all key business units, prioritising high consumption areas identified in 2024.
- Developing departmental action plans based on sub-meter data to target specific efficiency measures
- Continuing to address disputes over estimated readings, ensuring accurate data collection with Business Stream for all water supplies.
- Piloting water-saving technologies, such as automated flow control systems, in hospitality and spa operations.



Beyond Green

Swinton has recently joined Beyond Green a leading global brand that demonstrates sustainable tourism leadership.

Members are subject to a rigorous vetting process, based on globally recognised sustainable tourism standards and the United Nations Sustainable Development Goals.

Through this we hope to have an international platform to further promote the range of environmental practises and projects across the Estate.

Accreditation

Investors in the Environment

We will continue to uphold our Green Level Standard accreditation with Investors in the Environment by prioritising Employee Engagement, implementing resource measurement with quarterly updates, and actively working towards resource reductions.

Wildlife Farms and Estates (WFE)

Swinton is now participating in the WFE scheme which conducts scientifically based, evidence led and robust audits for landowners.

Accreditation is awarded to farms and estates that provide evidence of holistic and sustainable environmental, economic and social land management practices; recognising the multifunctional role of rural business and land use.

Personal Development

Our commitment to employee engagement remains strong in 2025, with a particular emphasis on marking National Environmental and Social Calendar Days.

Swinton Nourish

In 2025, the new Swinton Nourish programme will serve as a cornerstone of our sustainability and partnership efforts.

This initiative is designed to create impactful collaborations with corporate and community partners, focusing on delivering measurable environmental benefits, including enhanced biodiversity, carbon sequestration, and soil health improvements.

Nourish will also feature our Climate Action Academy, providing hands-on education opportunities through three annual forums that address critical climate action topics, share best practices, and foster networking among participants.

Through these partnerships, we aim to support organisations in achieving their ESG goals while actively contributing to the resilience and regeneration of the local environment.

Our overarching goal is to empower businesses and individuals to join us in tackling pressing ecological challenges for a more sustainable future.

For more information visit: nourish.swintonestate.com



CONCLUSION

In 2024, Swinton Estate made significant strides across environmental, social, and operational dimensions, reinforcing our long-term commitment to sustainability and responsible stewardship of our land, people, and resources.

We saw measurable progress in reducing reliance on fossil fuels. LPG and diesel usage both dropped by 8.8%, largely thanks to our expanding electric vehicle (EV) fleet and Swinton Park Hotel reduced biomass use slightly (-2.6%), while Swinton Bivouac saw an 11.3% increase due to mechanical failures and extended opening hours.

Not unforeseen was that Electricity usage rose at the Hotel and more sharply at Bivouac reflecting the transition from LPG to electric appliances and increased EV charging use. Notably, our solar panels began generating clean energy, avoiding 1.44 tonnes of CO₂.

Swinton continues to integrate sustainability into employee training, recruitment, and day-to-day operations. Our Sustainability Committee, CASTLE values, and initiatives like the Nourish Programme and Climate Action Academy demonstrate a growing culture of environmental leadership.

In 2024, Swinton Estate not only upheld but accelerated its commitment to environmental and social sustainability. From reaching carbon neutrality ahead of schedule to pioneering conservation projects and launching community programmes, we are proud to set a benchmark in sustainable estate management.

We look forward to building on this momentum in 2025 and beyond.

Kind regards,

Iain Shelton, CEO



Green is more than a word to us. It's a commitment to protect the environment so there's clean air, fresh water, and unspoiled nature for all to enjoy – today and tomorrow. Honouring that commitment means finding different ways to work, live and travel on the Swinton Estate.



SWINTON ESTATE

www.swintonestate.com

Issue 1: March 2025