



SWINTON ESTATE



EVENTS AT SWINTON ESTATE

Experience the Extraordinary

Swinton Estate, Masham, Ripon, HG4 4JH | swintonestate.com



20,000 ACRES OF YORKSHIRE COUNTRYSIDE

The Swinton Estate represents 20,000 acres of stunning Yorkshire countryside, with the impressive Swinton Park Hotel set at its heart.

Located in Masham, just 10 miles from Ripon in North Yorkshire, on the edge of the Yorkshire Dales, and 20 minutes from the A1(M), the Swinton Estate is mid-way between London and Edinburgh, and halfway between York and the Lake District. Northallerton and Thirsk train stations are 25 minutes away.

Privately owned by the Cunliffe Lister family, the Swinton Estate is one of the largest private estates in the country. It provides a unique setting for events of all kinds, whether business or pleasure.

A myriad of experiences, event spaces and dining options, bringing our Estate to Plate food philosophy to life, are available to ensure every event at the Swinton Estate is tailored to suit your requirements.

SUSTAINABLY MEETING YOUR NEEDS

The Swinton Estate has sustainability at its core. From heating provided by on-site biomass boilers, reed bed filtration systems and vast tree planting schemes, to menus created in partnership with Estate farm tenants, its award-winning green credentials set a new standard for green tourism.



LOCATIONS WITH A DIFFERENCE



Adam's Folly

Swinton Park Hotel

Exquisite private dining, with splendour and elegance. Hosting up to 20 guests, the Adam's Folly private dining room is the ideal location for your exclusive private event – with a fine-dining menu specially tailored to you by the expert chefs of Samuel's Restaurant

The Deer House

Swinton Estate

A restored period masterpiece nestled at the heart of the Deer Park overlooking Swinton Park, the Deer House is a fabulously unique space. Nestled amongst the herd of fallow deer, it is a great base for any meeting or event.



The Library

Swinton Park Hotel

A large and beautiful room, flooded with natural light from the floor-to-ceiling Georgian windows, with spectacular views over Swinton's majestic parkland. Perfect for large meetings, conferences or those requiring plenty of space to move around.



The Sitting Room

Swinton Park Hotel

South-facing, with views over the terrace and Home Lake through two expansive Georgian windows. The Sitting Room can be a private room, perfect for small family gatherings and celebrations.



The Panelled Room

Swinton Park Hotel

A beautifully elegant room able to accommodate theatre style or boardroom meetings, situated in Swinton Park Hotel. The Panelled Room affords stunning views across the front lawn, with a beautifully light and airy feel.



The Arnagill

The Terrace

The Arnagill forms part of The Terrace Restaurant and Bar as a private room ready to accommodate a private dinner party, business meeting or drinks party - complete with its own boot room, serving room and in-built AV screen.



Bivouac Tipi

Swinton Bivouac

Boasting spectacular views of the surrounding countryside, the Tipi is a fully furnished venue located at Swinton Bivouac, providing a blank canvas to create your own personal event, stamped with your corporate style. Seasonal only.



Spa Garden

Swinton Country Club

The Spa Garden are nestled between the Terrace Restaurant and Bar and the Country Club, with views across the four acre Walled Garden. Sitting beneath a fabulous 'sail' canopy, it is the perfect space for an 'alfresco' party, celebration; or as a unique business meeting setting or product launch. Seasonal only.



The Island

Swinton Park

The Island and Lake House on Top Lake is a retreat like no other. The perfect spot for a secluded meeting or private event. A totally unique environment where you arrive by hand-drawn cable ferry. Seasonal only.



Pommery Champagne and Croquet Lawn

Swinton Park

Enjoy fabulous, far-reaching views over the Deer Park or indulge in an informal game of croquet – in partnership with Pommery Champagne. The perfect location for an outdoor drinks reception. Seasonal only.



The Terrace Restaurant and Bar

Swinton Country Club

At the heart of relaxed eating and drinking on the Swinton Estate. Beautifully furnished alfresco ‘terraced’ gardens, perfect for all year-round for dining and drinks with friends. Available for private hire for a variety of events.



Cocktails in the Castle Bar

Swinton Park Hotel

Enjoy our carefully curated cocktail menu. Watch our skilful mixologist craft signature cocktails. The Castle Bar offers stunning views of the Deer Park and is located next to Adam’s Folly and Samuel’s Restaurant making it the perfect place for pre-dinner drinks.



Billiard Room

Swinton Park

An ideal retreat for a rainy day or a late evening, with a ‘hunting lodge’ vibe and, as the name suggests, a full-size Billiards table. This room is a great space to entertain complete with a children’s area and cinema. Alternatively head here for a post-dinner digestif.



The Bothy Hut

Swinton Estate

Nestled within a rock formation high on the moor on the Swinton Estate is a secluded, rustic Bothy Hut. Fire lit and picnic delivered, the Bothy Hut is a completely private place amongst the best of Yorkshire countryside. Seasonal only.

LOCATION OPTIONS

Location / Style Capacity	Theatre	Boardroom	Classroom	Banqueting	Reception
The Deer House	16	20	30	80	100
The Library	100	35	25	80	100
Adam's Folly	-	20	-	20	20
The Panelled Room	60	25	20	-	30
The Bothy Hut	-	-	-	-	12
Bivouac Tipi	-	36	48	48	48
The Arnagill	-	20	15	20	20
Spa Garden	50	20	20	20	50
The Island	-	-	-	-	6
Pommery Champagne and Croquet Lawn	-	-	-	-	100
Terrace Bar and Restaurant	-	-	-	-	150
The Castle Bar	-	-	-	-	10
Billiard Room	-	-	-	-	50



EATING AND DRINKING

All dining experiences embrace our Estate to Plate philosophy using the very best seasonal and local produce from across the Estate.

Our four-acre walled garden is the largest working kitchen garden of any hotel in England and produces the majority of our vegetables and herbs throughout the seasons. We source our meat, poultry and trout from our estate farmers, supporting the local community and reducing our food miles.

Sustainable dining at its finest.



CASTLE DINING OPTIONS

Adam's Folly

Swinton Park Hotel

Exquisite private dining, with splendour and elegance. Hosting up to 20 guests, the Adam's Folly private dining room is the ideal location for your exclusive private event – with a fine-dining menu specially tailored to you by the expert chefs of Samuel's Restaurant.



The Castle Library

Swinton Park Hotel

A magnificent, opulent space, beautifully lit from wall to wall, floor to ceiling Georgian windows and double doors leading straight out onto the South Lawn. The Library is perfect for hosting anything from a private lunch to a sumptuous wedding breakfast.

Chef's Table by Josh Barnes

An unforgettable journey of incredible food and drink at the heart of the Swinton Estate.

For special occasions and celebrations, make it exclusively yours and indulge in our private Chef's Table by Josh Barnes experience. Available for between 8–12 guests with our dedicated team on hand to guide you through an individually tailored evening – just for you. Price includes a eight-course tasting menu. Wine pairings an additional charge.



The Panelled Room

Swinton Park Hotel

The spacious Panelled Room is great for hosting dinner and private events. From fine-dining to buffet-style our chef's will create a fabulous menu. With an additional seating area. You can sit and relax while taking in the views of the Coach House and Front Lawn.



Afternoon Tea

Enjoy beautiful, sweet delicacies from our pastry kitchen, locally sourced meats, local preserves, and a selection of teas all served on traditional tiered service.

Price includes tea or coffee of your choice. Private rooms are available on request, minimum numbers apply.

Premium Grill

Various beverage packages available

Chef's seasonal choice of three canapés, a mixed platter of starters, followed by two entrée options and a mixture of three sides, and choice of dessert.

Think cured meats, cheese parfait, chutneys, whole roast leg of lamb, whole sea bass with a range of accompaniments and desserts.

Please ask for our latest menu.



Pizza in the Park, or in the Tipi

Nestled in the parkland, or at Swinton Bivouac, you'll enjoy a gorgeous antipasto platter, and a selection of wood fired stone baked pizzas, drinks and desserts to round off your event.

Includes: Antipasto sharing boards, a choice of woodfired pizza, and a dessert.

Swinton Food Trailer

Beverage options available

Swinton Estate's food trailer, complete with Estate Chef, offers a selection of four of the most delicious burger options grilled on-location, accompanied by salt and pepper fries - including our popular vegan Portabello Mushroom burgers, and Swinton Estate Venison burgers.



Picnics

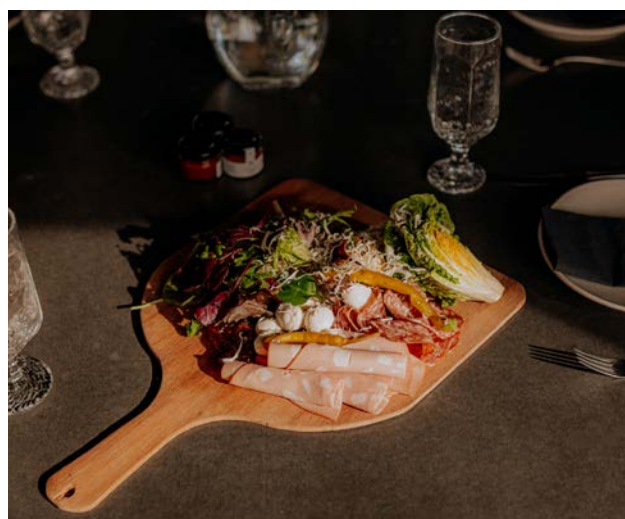
Soft drinks included.

Our lunch picnic hampers are perfect for off-grid locations such as the Bothy Hut, Island or further afield. Filled to the brim with Yorkshire's finest delights, from chutneys and cheeses, to fresh scones and cakes - complete with non-alcoholic drink(s).

Sandwiches and Salads

Beverage options available

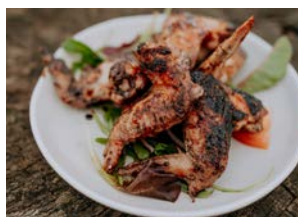
Enjoy a chef's selection of fresh sandwiches and salads using produce from our walled garden. This is a great option for a quick conference lunch before an afternoon of team building activities.



FOOD AND BEVERAGE OPTIONS

Food and Beverage Package	Min. no of guests	Price From (inc VAT)
Chef's Table by Josh Barnes	8	£105 per person
Premium Grill	6	£55 per person
Pizza in the Park, or in the Tipi	10	£37.50 per person
Afternoon Tea	-	£45 per person
Picnics	8	£22.50 per person
Food Trailer	30	£12 per person
Sandwich selection with Salad and Fries	6	£9 per person

A selection of teas and coffee, alongside bottled Estate still and sparkling water are available for formal meetings and conferences at £4.50 per delegate and £6.50 for tea, coffee and a snack.



ACTIVITIES AND EXPERIENCES

Relaxation at the Swinton Country Club

Recently awarded Five Bubble Luxury by the Good Spa Guide, the Swinton Country Club is a light, airy, contemporary spa space, designed to reflect the surrounding, natural environment.

The Swinton Country Club is host to an array of wellness facilities, including beautiful indoor pools, outdoor 'natural' pool, herbal sauna, aroma steam room, relaxation spaces and a state-of-the-art gym.

Wild Swimming and Forest Bathing

Enjoy ultimate wellness on the Swinton Estate with the beautiful serenity of the outdoor environment surrounding Swinton Country Club.

Reconnect with nature in a guided Forest Bathing experience, helping to reduce stress and balance your mood, or have a go at Wild Swimming amongst the tranquility of Coffin Pond within the parkland of Swinton Park Hotel.

Clay Shooting at E.J. Churchill Shooting Ground

E.J. Churchill on the Swinton Estate has an unrivalled reputation for providing stimulating, creative and quality clay shooting tailored to suit your group needs. Friendly, flexible and professional, E.J. Churchill offers lessons (group and individual), caddied rounds and the option for experienced shooters to shoot alone.

Laser Clay Shooting

Laser clays are a fun introduction into clay pigeon shooting. It uses real clays and shotguns adapted with lasers instead of shot gun cartridges. Laser clays are not about shooting tuition – it's a number of games designed to be fun and interactive.

Live for Today

Live for Today is a Yorkshire-based activity and team building company which has been in operation since 2012. They opened their Swinton base in the spring of 2025 and now offer a variety of invigorating and challenging activities across the Estate such as cryptic chase, raft building, archery, axe throwing as well as the newly opened Swinton Escape Rooms. There's something for everyone and to suit all abilities.

Cocktail Masterclasses

Try your hand at mixology with a fun and interactive cocktail-making masterclasses, led by our talented Swinton Estate bar team.

Learn the basics of cocktail composition and equipment must-haves, before having a go at stirring and shaking your own drinks like a true professional.

Cookery Courses at Swinton Cookery School

Swinton Cookery School is a relaxed, open demonstration kitchen housed in the converted Georgian stable wing adjacent to Swinton Park Hotel. We offer a range of courses, masterclasses, and cookery challenges, allowing us to arrange an experience to suit.

Fly Fishing at the Northern Fishing School

The Estate affords a wide range of fly fishing activities for the beginner or seasoned angler. We are delighted to accommodate groups of mixed ability.

Falconry Display

Birds of Prey displays and handling experiences are particularly exciting for corporate events; including lots of hands-on experience with a large variety of birds of prey - getting all members of the group involved! A display lasts around an hour depending on your requirements.

All our experiences can be tailored completely to suit your requirements. Full, complimentary access to the Country Club and its facilities is included for all guests of Swinton Park Hotel.

Activities	Min. no of guests	Max no of guests	From (inc VAT)
Cookery Course	2	12	£120 per person
Axe Throwing	2	12	£30 per person
Archery	2	12	£30 per person
Escape Room	2	12	£30 per person
Clay Pigeon Shooting	2	75	25 clays from £50 per person
Fly Fishing	2	6	£120 per person
Falconry	2	-	£30 per person



STAY AT THE SWINTON PARK HOTEL

Swinton Park Hotel offers 42 spacious and beautifully appointed rooms and Suites, ideal for events which require accommodation options for guests. Every bedroom in the Castle, and the more recently renovated Coach House, offer individually designed and decorated accommodation options with a variety of original features. Many rooms have glorious views across the parkland and lake, complimentary WiFi is available throughout the building and all guests can access the extensive spa and wellness facilities at the Swinton Country Club.

Our accommodation options are very flexible with many twin and family rooms available as well as interconnecting rooms and expansive Suites which couldn't fail to impress.



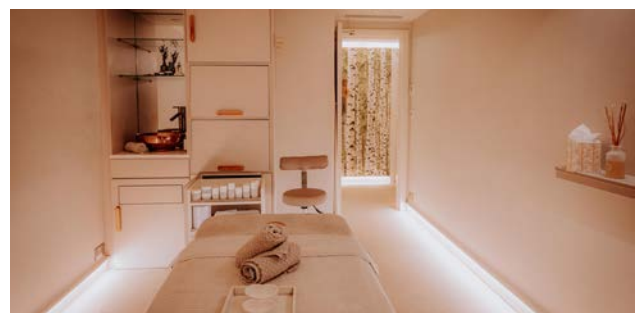
WELLNESS AT THE SWINTON COUNTRY CLUB

A light, airy and contemporary spa space, designed to reflect the surrounding, natural environment. A place to recharge the body, mind and spirit, restoring a sense of 'grounding' and calm. Beautiful indoor pools, an outdoor 'natural' pool, 'wild swimming' in the grounds, thermal experiences and spa garden; sit perfectly with holistic spa treatments, therapies and classes, bespoke facial and body treatments using organic, natural products from OSKIA and Bamford.

Situated on the first floor of Swinton Country Club, your treatment experience starts in the dedicated treatment reception where you will consult with your therapist and discuss your chosen treatment and product. Your wellness is our priority, and with a range of treatments from deeply relaxing massages, transformative facials and body treatments, you will leave feeling relaxed, yet invigorated, from top to toe.

Our spa facilities include:

- Indoor 18m Pool
- Hydrotherapy Pool
- 10m Outdoor Pool
- Wild Swimming Lake
- Aroma Steam Room
- Salt Room
- Finnish Sauna
- Alfresco Herbal Sauna
- Outdoor Hot Tub
- Relaxation Room
- Slumber Room
- Sleep Room
- Spa Garden
- Woodland Wellbeing Space
- Gym and Studio



EXCLUSIVELY YOURS

Swinton Park Hotel is available for private hire. If you would like to host an exclusive personal or company event, making use of all of the beautiful public areas and 42 bedrooms and suites at your disposal then our team will be delighted to assist. This unique opportunity allows you to make the most of both the stunning interior spaces but also the numerous outdoor spaces from cricket matches on the lawn to drinks receptions overlooking the Deer Park.

Please note that our members will still be allowed access to the Swinton Country Club and Terrace Bar and Restaurant throughout your event.

Please ask our Events team for a bespoke quotation.



SUSTAINABILITY ON THE SWINTON ESTATE



Green is more than a word to us. It's a commitment to protect the environment so there's clean air, fresh water, and unspoiled nature for all to enjoy – today and tomorrow. Honouring that commitment means finding different ways to work, live and travel on the Swinton Estate.

Our vision, as caretakers of the Swinton Estate, is to achieve ground breaking environmental and socially responsible standards. Our responsibility for the wellbeing of future generations is interwoven in the landscape that surrounds us. We are proud to be carbon neutral. Our ambition is to further reduce our footprint by 30% by 2040.

We are delighted to offer our corporate guests the opportunity to learn more about the Estate's own sustainability journey; providing talks, delivered by our sustainability team and tours of the Estate's moorland carbon capture measures, tree planting initiatives, biodiversity net gain (BNG), biomass and reed bed filtration.

Swinton is the perfect corporate destination to enhance your company's sustainability efforts. We relish the opportunity to be part of your commitment to the future.





SWINTON ESTATE

events@swintonestate.com

01765 680 972

swintonestate.com